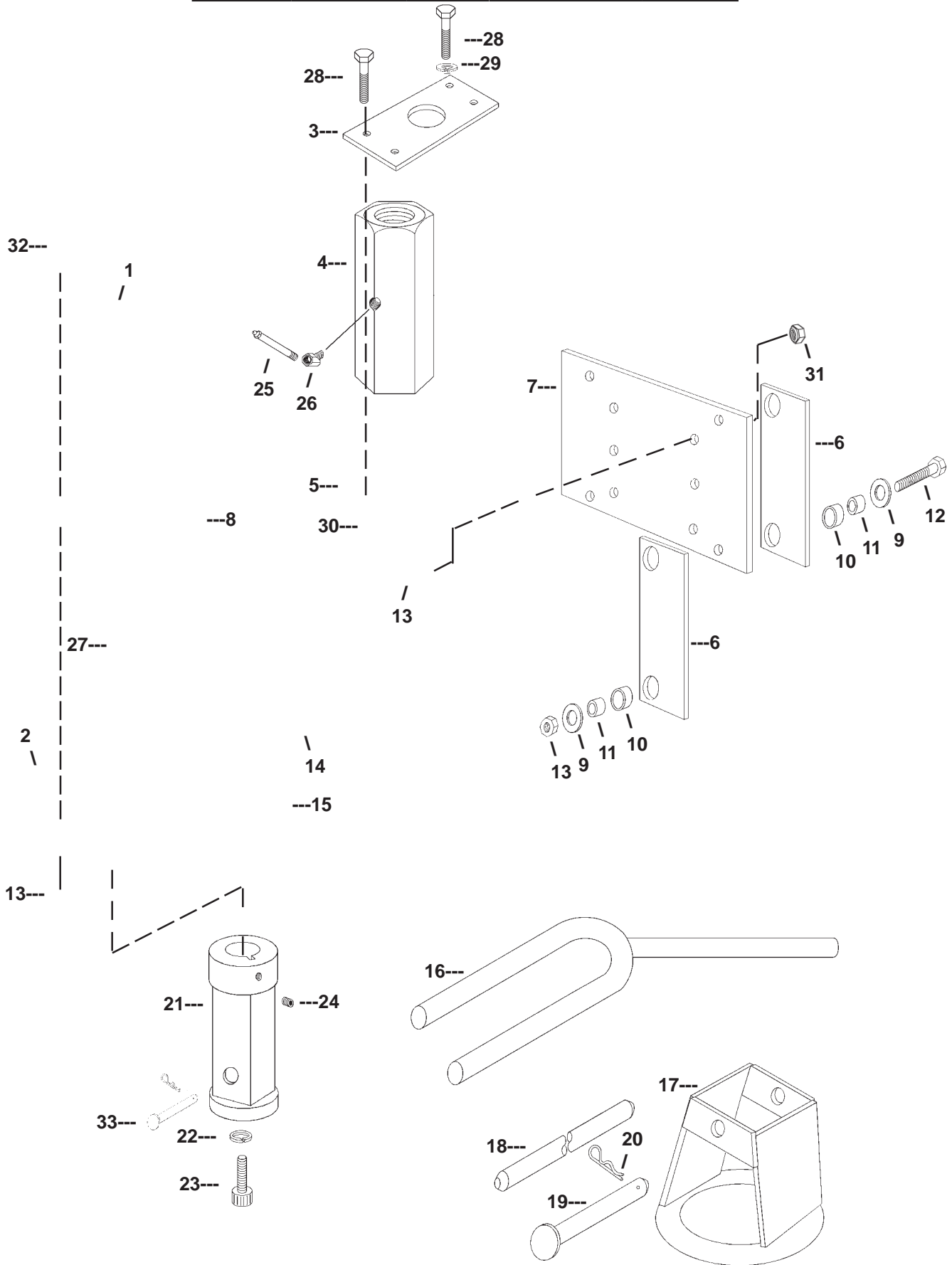


**BIG BEAVER
PARTS
MANUAL**

DRILL HEAD AND AUGER TOOLS

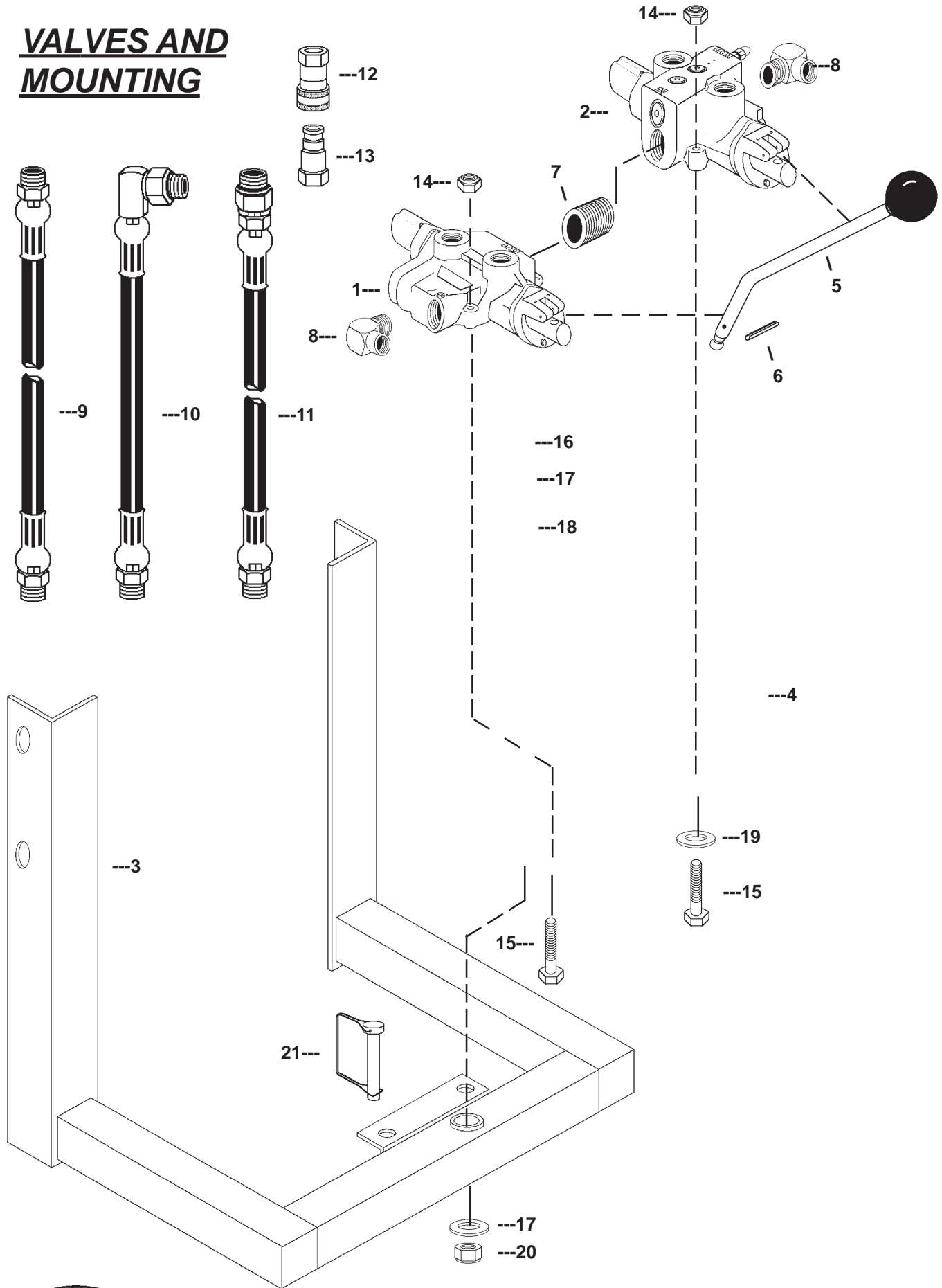


DRILL HEAD AND AUGER TOOLS

ITEM #	PART #	DESCRIPTION	QTY
1	30191-S6	Motor, Hyd. Auger Drive (11.9 cu. in. rev.)	1
	30191-S4	Motor, Hyd. Auger Drive (14.9 cu. in. rev.)	1
(not shown)	36342	Seal Kit, 2000 Series Motors w/suffix -002/-005	1
(not shown)	36347	Seal Kit, 2000 Series Motors w/suffix -006	1
2	36055	Drill Head, Inc. Clamp Assy.	1
3	36075	Plate, Nut Cap	1
4	36090	Nut, Lift Drive	1
5	36040	Base, Head	1
6	36080	Pad, Slide Friction	4
7	36035	Plate, Drill Head Mounting	1
8	36054	Key, 5/16 Square x 1-1/4	1
9	30153	Washer, Flat, 1/2"	8
10	36085	Bushing, Roller	8
11	36086	Bushing, Roller Guide	8
12	6533	Bolt, 1/2 x 2-1/2	4
13	30158	Nut, 1/2 Nylon Lock	12
14	30163	Cotter Key, 1/8 x 1	2
15	36070	Pin, Hinge	1
16	36395	Auger Fork	1
17	36370	Retrieval Ring	1
18	36380	Pin, Retrieval	1
19	36379	Pin, Retrieval Attachment incl. Hairpin	1
20	9059-1	Hairpin Cotter	1
21	36385	Adaptor, Heavy Duty, Hydraulic	1
22	3012-3	Washer, Lock, 3/8"	1
23	3012-2P	Socket Head Cap Screw, 3/8 x 7/8 with Nylon Locking Plug	1
24	9021	Set Screw, Incl. with Adaptor	1
25	36092	Grease Fitting, Extension	1
26	36091	Elbow, 45 deg. 1/8" NPT	1
27	36095	Clamp Assembly	1
28	3012-2	Bolt, 3/8 x 1	4
29	3012-3	Washer, Lock, 3/8"	2
30	30154	Nut, 3/8 Nylon Lock	2
31	30408	Bolt, 1/2 x 1-1/2	6
32	6532	Bolt, 1/2 x 2	2
33	36382	Pin, Adaptor incl. Hairpin	1



VALVES AND MOUNTING



VALVES AND MOUNTING

ITEM #	PART #	DESCRIPTION	QTY
1	36340	Valve, Hyd. 4-Way,, Auger Rotation	1
	36334	Seal Kit, (not pictured) for above Valve	1
2	36335	Valve, Hyd. 4-Way, Auger Lift	1
	36331	Seal Kit, (not pictured) for above Valve	1
3	36290	Bracket, Valve	1
4	36300	Valve Plate, Weldment	1
5	36338	Handle, Valve	1
6	36343	Roll Pin, 1/8 x 1-3/8	1
7	35290	Nipple, 3/4 NPT Close	1
8	30414	Fitting, Elbow, 90 deg. 3/4 NPT x 1/2 NPT	2
9	36355	Hose Assy., Hyd. 1/2 x 144	2
10	36345	Hose Assy., Hyd. 1/2 x 22	2
11	36350	Hose Assy., Hyd. 1/2 x 75	2
12	35260	Coupling, Quick Disconnect, Female	1
13	35261	Coupling, Quick Disconnect, Male	1
14	30204	Nut, 1/4" Nylon Lock	6
15	5077	Bolt, Hex, 1/4 x 1-3/4	6
16	36408	Bolt, Hex, 1/2 x 3-1/2	1
17	30153	Washer, 1/2 Flat	2
18	36305	Bushing, Pivot	1
19	4204	Washer, 1/4 Flat	6
20	30158	Nut, 1/2 Nylon Lock	1
21	6554	Pin, Snapper, 5/16"	1

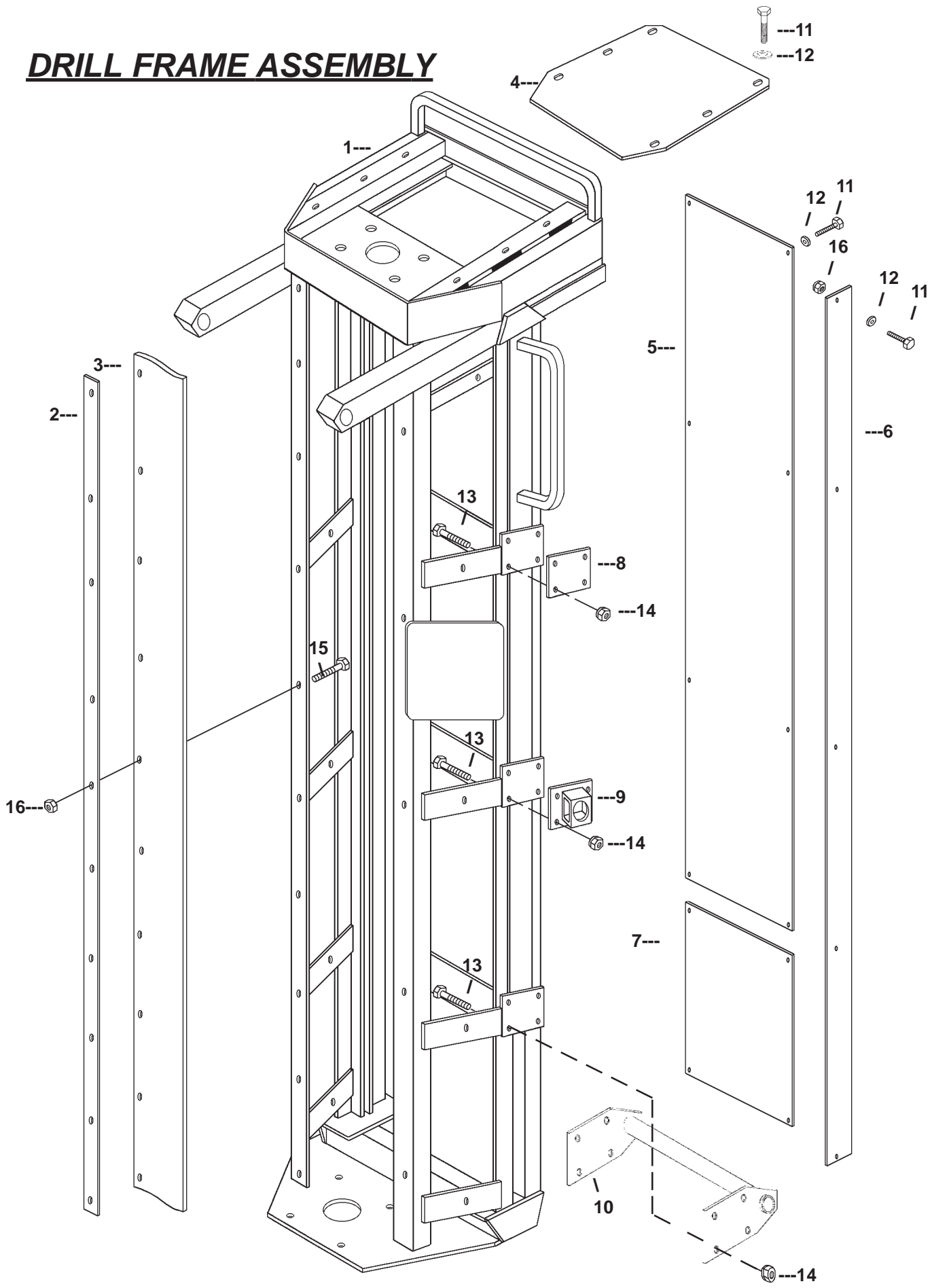


AUGER LIFT DRIVE

ITEM #	PART #	DESCRIPTION	QTY
1	30191-8	Motor, Hyd. Shaft Drive	1
2	30182	Key, Woodruff, 1/4 x 1	1
3	36310	Spacer	1
4	36145	Motor Mounting Plate	1
5	36315	Sprocket, 48 Tooth, 40 RC	1
6	36320	Sprocket, 12 Tooth, 40 RC	1
7	36325	Roller Chain, ANSI No. 40 (65 Links)	1
8	36330	Link, Connecting No. 40 RC	1
9	36155	Plate, Top Bearing	1
10	36221	Washer, Thrust, 1/32"	2 or as needed
11	36220	Bearing, Thrust 1	2
12	36223	Washer, Thrust, 3/32	4
13	36215	Bearing, Flange, 1-1/2	2
14	36140	Plate, Bottom	1
15	9036	Grease Fitting	1
16	36150	Drive Shaft, Threaded	1
17	4081	Key	1
18	9024-BP	Bolt, 1/4 x 1	1
19	30153	Washer, 1/2 Flat	1
20	5053	Washer, 1/4 Flat 1-1/4 OD	1
21	30171	Set Screw, 5/16-18 x 5/16	1
22	9021	Set Screw, 1/4-20 x 1/4	1
23	30408	Bolt, 1/2 x 1-1/2	4
24	6532	Bolt, 1/2 x 2	8
25	30158	Nut, 1/2 Nylon Lock	12



DRILL FRAME ASSEMBLY

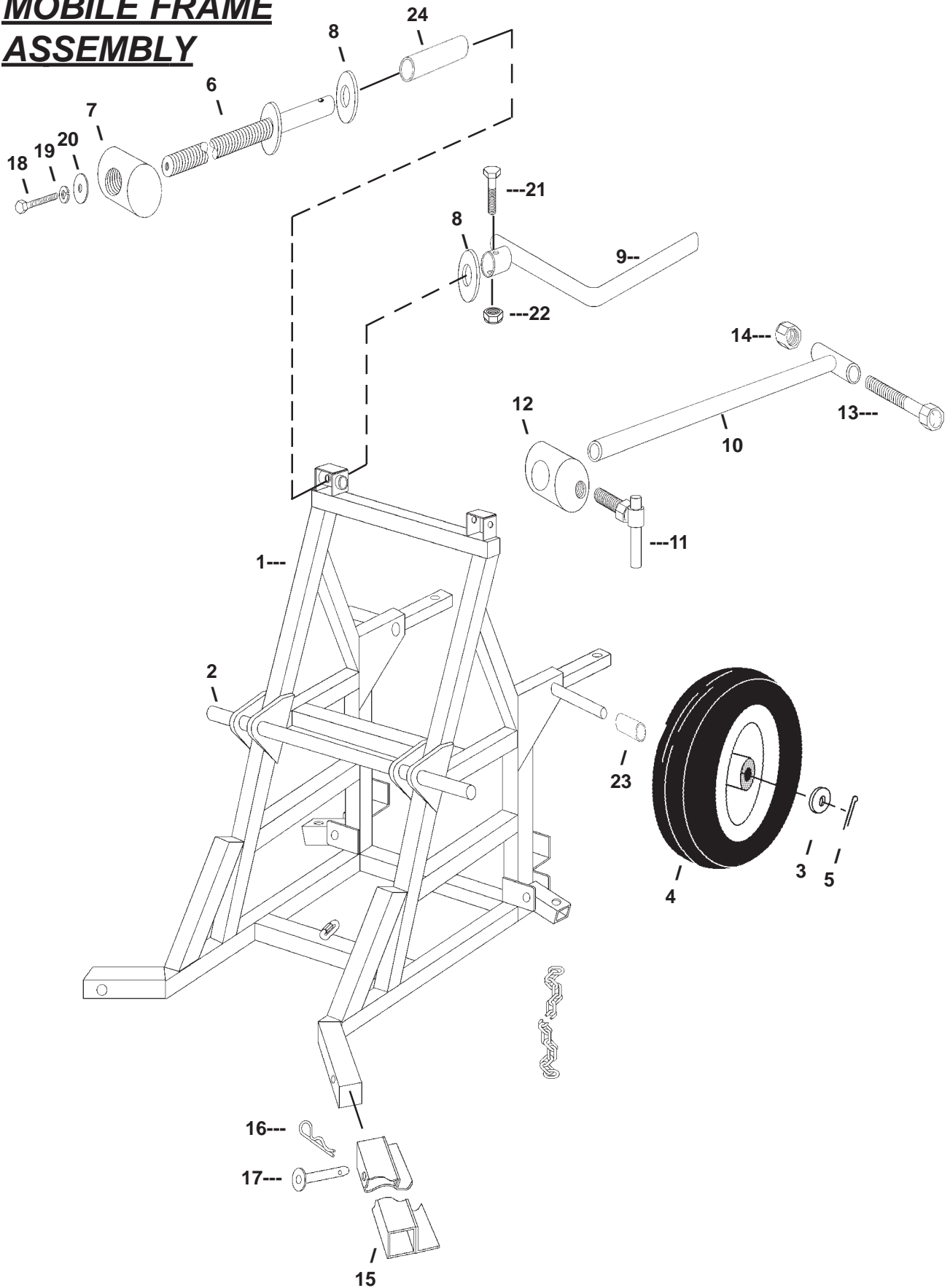


DRILL FRAME ASSEMBLY

ITEM #	PART #	DESCRIPTION	QTY
1	36000	Drill Frame Only	1
2	36190	Bar, Front Guard	2
3	36210	Guard, Front	2
4	36225	Plate, Cover	1
5	36195	Cover, Rear	1
6	36205	Cover, Side	2
7	36200	Cover, Rear Bottom	1
8	36160	Plate, Side	2
9	36110	Bracket, Trunion Mounting	2
10	36105	Bracket, Pivot	1
11	4008-1	Cap Screw, 1/4 x 5/8 Gr 5	18
12	4034-1	Washer, 1/4" SAE Flat	28
13	30408	Cap Screw, 1/2 x 1-1/2 Gr 5	24
14	30158	Nut, 1/2" Fiber-Lock	24
15	9024-BP	Cap Screw, 1/4 x 1 Gr 5	20
16	30204	Nut, 1/4" Fiber-Lock	30
17	9024	Bolt, 1/4 x 7/8	10



MOBILE FRAME ASSEMBLY

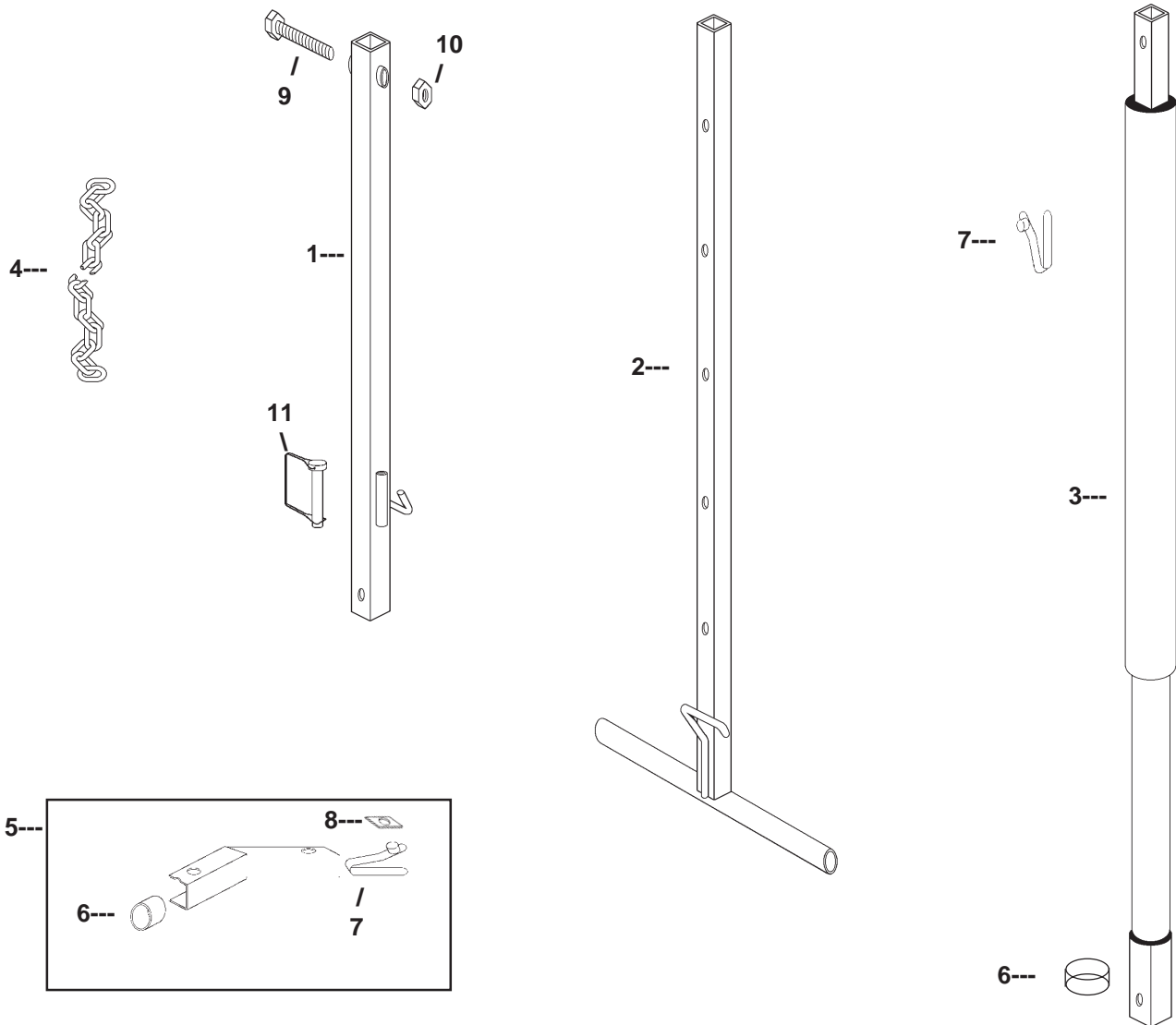


MOBILE FRAME ASSEMBLY

ITEM #	PART #	DESCRIPTION	QTY
1	36245	Frame, Mobile	1
2	36185	Pin, Pivot	1
3	30164	Washer, Flat 3/4	4
4	40631	Wheel, 16" with 3/4" Bore	2
5	36298	Cotter Pin, 1/4 x 1-3/4	4
6	36115	Shaft, Angle Adjustment	1
7	36165	Trunion, Drill Frame	1
8	36117	Washer, 1" Plain	2
9	36120	Handle, Crank	1
10	36125	Brace, Slide Bar	1
11	36130	Handle, Brace	1
12	36135	Trunion, Brace	1
13	36118	Bolt, Hex, 3/4 x 4	1
14	9096	Nut, 3/4 Nylon Lock	1
15	36279	Foot, Left Hand (shown)	1
	36278	Foot, Right Hand (not shown)	1
16	9059-1	Hairpin Cotter	2
17	36383	Pin, Auger incl. Hairpin	2
18	9024-BP	Bolt, Hex 1/4 x 1	1
19	9025	Washer, Lock 1/4	1
20	5053	Washer, Flat 1/4 x 1-1/4 OD	1
21	5077	Bolt, Hex 1/4 x 1-3/4	1
22	30204	Nut, 1/4 Nylon Lock	1
23	36280	Bushing	2
24	36175	Bushing, Trunion	1



TORQUE TUBE AND STAY



ITEM #	PART #	DESCRIPTION	QTY
1	36235	Back Stay, Pivot	1
2	36240	Back Stay, Foot	1
3	9092	Torque Tube, No-Pull-Out	1
4	36285	Chain, 6 foot, 3/16" Proof Coil	1
5	36403	Adaptor Assy., 45 deg. Torque Tube	1
6	9058-1	Button Shield	2
7	9058	Spring & Button	2
8	9084-1	Pad, Button	1
9	36408	Bolt, Hex N/C 1/2 x 3-1/2	1
10	30158	Nut, 1/2" Fiber-Lock	1
11	6511	Pin, Snapper, 3/8"	1



BIG BEAVER SAFETY SIGN AND DECALS



DANGER

NEVER DRILL HOLES WHERE THERE IS A POSSIBILITY OF UNDERGROUND POWER CABLES OR OTHER HAZARDS

DRILL HEAD CONTROLS



RAISE



LOWER



LITTLE BEAVER, INC., P.O. BOX 840, LIVINGSTON, TX 77351 409/327-3121



WARNING

FAILURE TO OBSERVE SAFETY INSTRUCTIONS AND PRACTICES CAN CAUSE PROPERTY DAMAGE, SERIOUS BODILY INJURY AND/OR DEATH.



CAUTION

1. READ AND UNDERSTAND THE OPERATOR'S MANUAL BEFORE OPERATING. IF OPERATOR'S MANUAL IS NOT AVAILABLE, CALL OR WRITE FOR FREE REPLACEMENT.
2. KEEP ALL SAFETY SHIELDS AND DEVICES IN PLACE.
3. MAKE CERTAIN EVERYONE IS CLEAR BEFORE OPERATING
4. KEEP HANDS, FEET AND CLOTHING AWAY FROM MOVING PARTS.
5. SHUT OFF POWER TO ADJUST, SERVICE OR CLEAN.
6. RELIEVE HYDRAULIC PRESSURE BEFORE DISCONNECTING LINES.
7. NEVER OPERATE DRILL WITHOUT CORRECTLY INSTALLING TORQUE TUBE.
8. LOWER DRILL HEAD BEFORE MOVING THE MACHINE.

/
1

2---



DANGER




To prevent serious injury or death from pinching and rotating auger:

* Keep all persons and objects clear while any part of this machine is in motion.

ITEM #	PART #	DESCRIPTION	QTY
1	36232	Safety Sign, Big Beaver	1
2	36233	Decal, Danger, Prevent Injury	2

